

# PORTABLE EDGE DATA CENTER

INSTANT EDGE: ONE CABLE. ROLL CAMERA. ACTION.



BRINGING THE  
DATA CENTER TO SET -

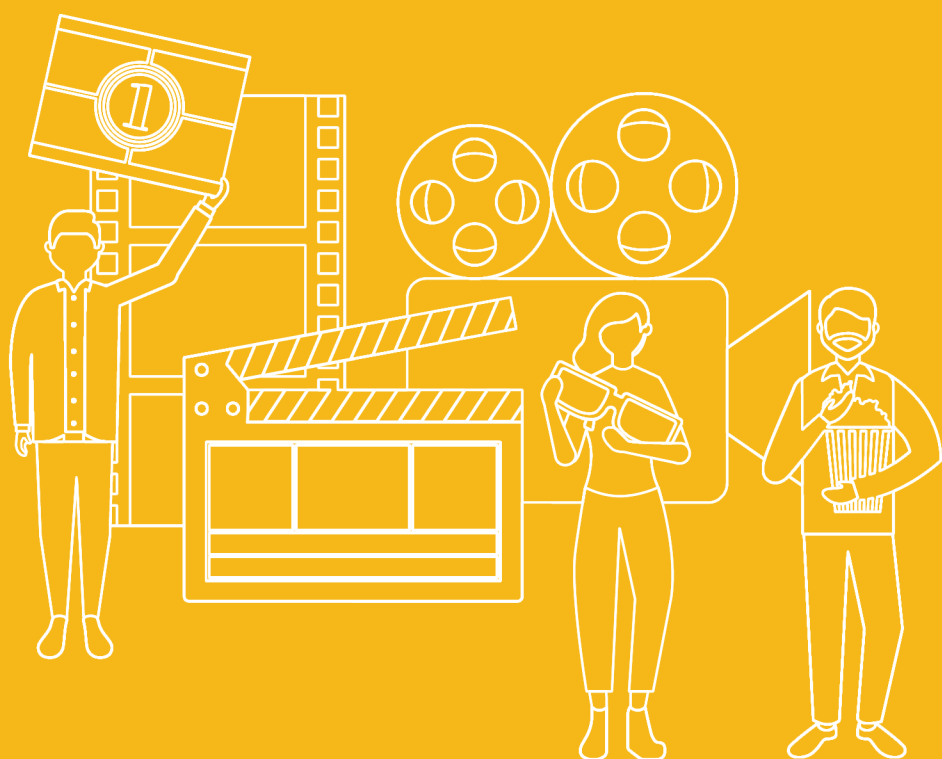
From exotic movie location to  
Live Music Concerts



# A Premium Solution Worth the **Spotlight**

From large-scale blockbusters to lean commercial crews, HiveRadar's Portable Edge Data Center enables secure, scalable infrastructure that's just as mobile as your team. Whether you're filming in a warehouse or the wild, your IT backbone follows with zero compromise.

## Industry **Overview**



- Movie and TV sets today are super heavy on data, always moving, and need things done yesterday.
- Whether it's a soundstage or a mountain, crews need fast, secure tech that can keep up.
- Things like offloading big video files, syncing with editing teams, managing assets, and running real-time apps are super important.

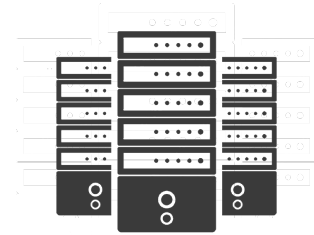
---

Here's the lowdown on the HiveRadar Portable Edge Datacenter for the entertainment industry:

# Traditional Approach vs. HiveRadar Portable Edge Approach



**New Way (HiveRadar P-EDC)**



**Old Way (Legacy)**

<b>Location &amp; Deployability</b>	<p>Built for crazy production life – a full data center in a tough 4U box you can roll, carry, or even backpack in. Airline check-in ready, under 100 lbs (45kgs)!</p>	<p>Works okay in cities. Gets crazy expensive and logistics-heavy for remote/exotic locations (no roads, power, or internet).</p>
<b>Data Management &amp; Security</b>	<p>Built-in all-flash storage (10TB to 96TB+). Super fast data transfer (2.5Gb to 10Gb ports). Data is safe with native HCI node redundancy (Scale Computing, StorMagic, ProxMox, or Microsoft) and secure sync to HQ.</p>	<p>Dealing with tons of 4K/8K data means offloading, backing up, and syncing to HQ. Portable hard drives and memory cards can easily get lost or stolen.</p>
<b>Connectivity &amp; Comms</b>	<p>Everything included: networking, compute, storage, PCI DSS-compliant cellular gateway, and integrated Starlink mini storage. Cellular wireless gateway with 9-foot mast for better signal. Local multi-gigabit Wi-Fi. Can create a mesh network for 500+ clients. HCI cluster can run a local PBX server for PTT apps instead of separate radios.</p>	<p>Setting up a private wireless network is tough. Legacy stuff means two-way radios, expensive satphones, and slow data sync. Hard and costly to cover big areas.</p>
<b>Internet Reliability</b>	<p>HiveRadar Turnium service combines multiple internet connections (Starlink, 5G, fixed) for aggregated, encrypted SD-WAN (“bi-directional” bandwidth). Super reliable internet and VPNs without constant firewall changes. Optional private 5G cellular network for huge movie sets.</p>	<p>Expensive business lines or complex firewall configurations for VPN. Unreliable in remote spots.</p>
<b>Power &amp; Logistics</b>	<p>Uses tiny amounts of power (about the same as a 100W light bulb on idle, 200W-700W max load). Offers smart portable battery backups (1kW-8kW, expanding to 48kW) that work with solar and dual-fuel generators for off-grid power, all controllable from your phone.</p>	<p>Old gear uses a ton of power, needs generators, battery backups, and lots of crew to manage. Noise, fuel storage, and cooling headaches.</p>
<b>Live Events</b>	<p>Easily brings huge amounts of digital assets with high-speed networking to live events, all in a redundant HCI array. Perfect for short-term events – set it up, use it for a day or weeks, then pack it up and roll it away.</p>	<p>Storing digital assets meant huge, power-hungry servers in trucks or easily lost/stolen portable hard drives. Building a full data center for short-term events (sports, fairs, etc.) is time-consuming and pricey.</p>

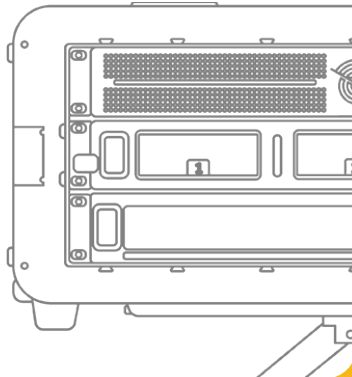


# KEY FEATURES & ADVANTAGES

The HiveRadar P-EDC re-imagines the data center, making it so one person can carry and deploy it. This system is built to provide instant, secure IT infrastructure where patient care is needed most - without relying on traditional IT resources or facilities.

## True Data Center in a Box

Fast switching, multi-node HCI, and all-flash storage for demanding tasks like camera offloads, local playback, and real-time sync. Built-in PDU, cloud/local management, and PCI-DSS-compliant 5G gateway firewall for secure internet and intranet.



## Ready-to-Go, Plug-and-Play

Production waits for no one! This system arrives preconfigured and fully integrated, deploys with just one cable – no days of IT setup. If something breaks, it can be hot-swapped and a full replacement shipped fast.



## Connectivity Anywhere

Optional multi-ISP aggregation with static IPs over 5G, satellite, or Wi-Fi for solid, low-latency access without messing with firewalls or DNS. Keeps your production network stable even in super remote spots.



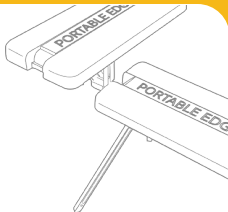
## Ultra-Portable & Production-Proof

Smallest 4U rugged chassis, one person can deploy it. Looks cool too, with futuristic LED lighting and details, plus it is tough.



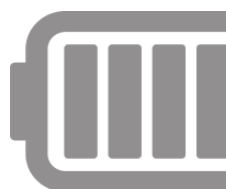
## Built for Any Set

Super versatile for tight or uneven ground – works on gravel, trailers, rooftops, fields. Lid doubles as a bench or desk for your tech team.



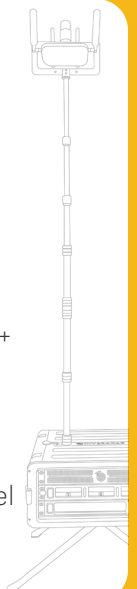
## Off-Grid Ready

Power options include portable UPS (1kWh–48kWh), solar panels, and dual-fuel generators – perfect for remote shoots or blackouts. Add a 6000 BTU battery-powered AC to keep sensitive gear cool in hot weather.



## Accessory Ecosystem Tailored for Set Life

Padded cover, mounts for ultra-high capacity 10G PoE++ wireless APs, dust filters, leveling feet, articulating wheels, and all off-grid power gear (portable battery backup, solar panels, dual-fuel generator, and micro AC).



## SIMPLIFIED DEPLOYMENT



- We've re-imagined the data center so one person can carry it.
- Has everything: 5G/Starlink internet, PDU, redundant HCI with compute and storage, high-speed PoE+ networking, mounting masts, and lids that turn into a portable desk.
- Easy-to-use components, configured with your favorite HCI software.
- Can be shipped pre-configured – just plug in one cable!
- It is a world-first transformer edge data center built for terabytes of video files, super affordable, and could even be a usable movie prop!

## A PREMIUM SOLUTION

WORTH THE SPOTLIGHT

From huge blockbusters to small commercial crews, HiveRadar's Portable Edge Data Center gives you secure, scalable tech that moves with your team.

Filming in a warehouse or the wilderness, your IT backbone goes with you, no compromises!



Film faster.



Sync smarter.



Stay connected

## CONTACT US

TO SCHEDULE A DEMO,  
proof of concept, or trial deployment  
tailored to your operational needs.

- ✉ [sales@hiveradar.com](mailto:sales@hiveradar.com)
- 🌐 [www.hiveradar.com](http://www.hiveradar.com)
- ☎ +1-416-637-0325

READY TO EXPERIENCE THE FUTURE OF EDGE COMPUTING?



**INSTANT  
EDGE** | **DEPLOY.  
CONNECT.  
COMPUTE.**